



The voice of our sustainable
built environment



GET INVOLVED
IN UKGBC PROJECTS
THIS YEAR!

2025 - 2026

PROJECT AND PARTNERSHIP OPPORTUNITIES 2025-2026

Since 2007, UKGBC has proudly worked hand-in-hand with our members and partners to drive innovation and transformation across the built environment.

Over the past 18 years, our collective impact has been amplified through deep collaboration - bringing together a diverse community of stakeholders to share knowledge, overcome barriers and co-create solutions. Together, we've harnessed our shared expertise and passion to deliver meaningful progress on the most pressing sustainability challenges facing our industry.



Getting involved in UKGBC's work is one of the core benefits of membership, by participating in a project (whether that's through Task Groups, workshops, or similar events) organisations and individuals have a hands-on way to shape industry guidance, share insights, and collaborate with peers. It's a key part of the value we offer to all members.

**The
Guardian**

UK schools and offices not equipped for impact of global heating, report warns

Exclusive: UK Green Building Council calls for adaptation of millions of buildings and warns of flood threats to towns

Additionally, becoming a Project Partner is a powerful way to further drive change. With a strategic role, Partners shape initiatives, boost visibility, and lead on issues that matter most. It's a chance to be at the forefront of transformation - working with UKGBC and its network to drive lasting impact. Typically there are 3 to 5 Partners per project.

The opportunities outlined in this document represent the next stage of the 2025 - 2026 programme year, offering our members a unique opportunity to contribute to our mission, and influence the evolving definition of best practice within the built environment.

"THE UKGBC HAS CREATED AN UNRIVALLED NETWORK THAT ENCOURAGES COLLABORATION ACROSS THE BREADTH AND DEPTH OF THE INDUSTRY, HELPING FURTHER DRIVE THIS MUCH NEEDED CHANGE"

- KAELA FENN-SMITH, MANAGING DIRECTOR, CBRE

PROJECT PARTNERSHIP

Beyond advancing our shared ambitions and supporting the realisation of critical industry targets, members partnering on UKGBC outputs will also be able to:

DRIVE MEANINGFUL IMPACT

- Enable real progress in the built environment by directly supporting and shaping the delivery of a high-impact project.
- Take a strategic steering role - helping to guide the project's direction, shape its outputs, and influence how those outputs are communicated to industry and government for maximum uptake.
- Secure a seat on each relevant project working group, giving your team a voice in shaping deliverables, activities, and campaigns.

RAISE YOUR BRAND PROFILE

- Gain brand visibility through logo placement on all project-related outputs and materials, including reports, videos, and presentations, as well as through speaking opportunities.
- Receive tailored communications assets to showcase your organisation's leadership and support for the initiative.
- Access opportunities to present at key moments - such as project launches, political briefings, and post-launch industry events.

EXTEND YOUR NETWORK

- Collaborate with industry leaders and build lasting relationships through regular partnership interactions and exclusive events.
- Access a broad network spanning the built environment value chain - opening doors to new connections with clients, suppliers, and strategic partners.

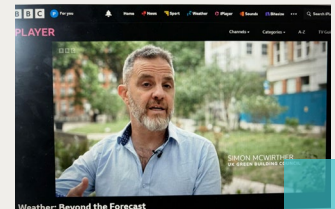
DEVELOP YOUR STAFF

- Empower your team with hands-on experience and valuable knowledge exchange through active participation in project activities.
- Enable individuals to engage with a diverse range of stakeholders and co-create practical, forward-thinking solutions for the industry.



Director Yetunde Abdul for the **BBC Six O'Clock news**

CEO Simon McWhirter for **iPlayer** and **BBC2**.



CEO Simon McWhirter for **BBC London News**.

UPCOMING PROJECTS

2025 - 2026

SCALING SUSTAINABLE SOLUTIONS



OVERVIEW

This initiative drives the adoption of innovative sustainability solutions by tackling barriers that prevent them from scaling across the built environment.

WHY IT MATTERS

While the sector continues to generate innovative products, methods, and business models, many fail to move beyond pilot stage — and encounter the so-called “Valley of Death”. Solutions often stall due to regulatory uncertainty, risk aversion, or lack of visibility. If we want to accelerate transformation across the industry, we must support these innovations with the networks, credibility, and practical pathways they need to thrive.

WHAT WE'RE DOING

- **Connecting Innovators with Opportunities:** We're launching a matchmaking service to connect solution providers with projects and organisations wanting to adopt innovative approaches.
- **Showcasing and Spreading Innovation:** Through workshops, networking events, and solution showcases we're creating a space to surface promising solutions and accelerate their adoption across the sector.
- **Unlocking Systemic Change:** We're conducting research on the systemic enablers and barriers to scaling, and engage with government departments to inform policy that better supports innovators.
- **Deep Dive into Secondary Materials Markets:** Looking at secondary materials markets, focussed on accelerating the

adoption of reuse and takeback solutions across the built environment by connecting existing innovations with industry-wide scaling efforts.

MEMBER OPPORTUNITIES

Please refer to our Member Newsletters for updates on upcoming workshops, roundtables, and interviews that support our innovation and secondary materials market work. If you'd like to participate in the matchmaking service, please get in touch with [Emily-Rose Garnett](#).

PARTNERSHIP OPPORTUNITIES

For member organisations seeking a more strategic role, Project Partnership involves a £5,000 contribution and will help guide the focus of the work and you'll receive recognition across outputs and events, early access to insights, and the chance to visibly champion innovation leadership across the built environment.

Anticipated Timeline: Running from now until March 2026.

BusinessGreen™ **City of London landmark** **One Poultry to undergo** **major net zero retrofit**

Project led by UKGBC, Bill Gates' Breakthrough Energy, and FORE Partnership hailed as a 'live showcase for innovative retrofit solutions'

To discuss further, get in touch with [Emily-Rose Garnett, Senior Solutions and Innovations Advisor](#)

UK CLIMATE RESILIENCE ROADMAP

STAKEHOLDER ACTION PLANS



"THE UK CLIMATE RESILIENCE ROADMAP HAS VERY SPECIFIC RECOMMENDATIONS WHICH MOVE TO REAL ACTION, REAL DELIVERY, UNDERSTANDING THAT CLIMATE IMPACTS ARE HAPPENING TODAY, HAPPENING NOW, AND WE NEED TO GET READY AT SPEED".

- EMMA HOWARD BOYD CBE. CHAIR, LONDON CLIMATE RESILIENCE REVIEW & FORMER ENVIRONMENT AGENCY CHAIR

- **Strategic Alignment** that supports both planning and delivery by turning broad recommendations into tailored actions for key sectors and disciplines. This guidance will empower organisations to take proactive steps to protect assets, operations, and communities from climate-related risks.

OVERVIEW

Building on our UK Climate Resilience Roadmap, this project defines concrete actions for different stakeholder groups across the industry to improve climate resilience in the short, medium, and long term.

WHAT TO EXPECT

- **Collaborative Workshops** with stakeholders from across the value chain to gather insights and co-develop practical, prioritised action plans.
- **Targeted Outputs** in the form of stakeholder-specific action plans — designed to be tangible, accessible, and ready for implementation across various parts of the industry.

MEMBER OPPORTUNITIES

Individuals from UKGBC member organisations can participate in this project through a series of workshops and roundtables that will support the development of the Stakeholder Actions Plans. Keep an eye on our Member Newsletter for announcements.

PARTNERSHIP OPPORTUNITIES

For member organisations seeking a more strategic role, becoming a Project Partner includes a £5,000 contribution and provides opportunities to steer the project's direction, gain visibility through branding and events, and contribute more deeply to sector-wide impact.

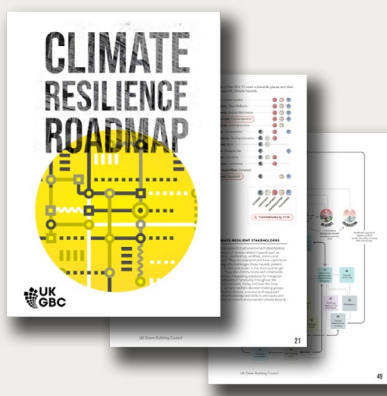
Timeline: Starts Autumn 2025.

To discuss further, get in touch with **Yetunde Abdul, Director of Industry Transformation**

BUILDING ADAPTATION, FINANCE AND COST EVALUATION

OVERVIEW

Climate Adaptation is imperative for creating a sustainable and resilient built environment. There are a range of adaptation measures used to adapt buildings to hazards, reducing exposure and risk. This project applies findings from the UK Climate Resilience Roadmap to real-world buildings, exploring adaptation strategies, measures and their associated costs at asset level. Subject to demand, this work may be broken into separate streams.



WHAT TO EXPECT

- **Insight into the Evolving Cost of Adaptation:** As the financial landscape of climate adaptation continues to shift, the need for robust, evidence-based insights is growing. This project will deepen understanding of both the Whole Life Cost of adaptation measures and the range of solutions available — drawing on the latest recommendations from the UK Climate Resilience Roadmap.
- **Real-world Application and Learning:** Where feasible, the project will incorporate operational insights from real buildings that have implemented adaptation measures, ensuring they are grounded in practical experience.
- **Hands-on Involvement through a Task Group:** Delivered in UKGBC's signature

Task Group format — offered as part of membership — this project provides a hands-on opportunity to shape the work, collaborate with peers, and gain early access to emerging insights.

MEMBER OPPORTUNITIES

Individuals from UKGBC member organisations can join this project as Task Group participants — playing a hands-on role in shaping the work, sharing their expertise, and collaborating with a dynamic network of peers.

PARTNERSHIP OPPORTUNITIES

For member organisations seeking a more strategic role, becoming a Project Partner includes a £5,000 contribution and provides opportunities to steer the project's direction, gain visibility through branding and events, and contribute more deeply to sector-wide impact.

Timeline: Starts Autumn 2025; outputs anticipated Summer 2026.



UK Green Building Council Sounds Alarm: Millions of British Buildings Unfit for Extreme Weather

To discuss further, get in touch with **Yetunde Abdul, Director of Industry Transformation**

REGENERATIVE PLACES FRAMEWORK

OVERVIEW

The decarbonisation of our built environment is fundamental to mitigating climate change, yet unless we both consider the interconnected societal and environmental challenges, and shift towards an approach that has a 'net positive' impact on our health, our communities, and our ecosystems, we risk missing the opportunity to leverage the most compelling — and the most tangible — benefits of our transition towards net zero. Retrofitting our [19 million poorly rated homes](#) and the Government's ambition to address the housing crisis, could both become powerful catalysts to deliver wider 'regenerative' benefits to communities, but current practice does not encourage holistic outcomes, or consider resilience to future challenges. This project involves the co-development of a multi-stakeholder framework to embed a more 'regenerative' approach into place-based development.

WHAT TO EXPECT

- **Co-creation of a Regenerative Vision:** UKGBC's Regenerative Places programme is conceived as a powerful way to co-create, with our members and local partners, a positive - regenerative - vision for the future. We aim to deepen understanding of what this looks like, through drawing together tangible real world examples of projects that are already starting to embed regenerative principles into their approach.
- **Guidance on 'how to' Embed Regenerative Principles:** Through analysing how these real world projects are able to embed regenerative principles, we will co-develop a framework to support industry in understanding and communicating the key components of a more regenerative approach - e.g. principles, processes, mindsets - so that we can scale the ways of working that start to ["restore, renew, and revitalise"](#) our built environment as well as the ecosystems we depend on, so that people and places can thrive.

- **Collaborative and Systems-led:** Learning from our Systems-Change programme, Climate Resilience Roadmap and Nature-Positive Framework, this project will combine a "Task Group" format - which is included as a core feature of UKGBC membership and offers a hands-on way to shape the work, collaborate with peers, and gain early insights - with collaborative workshops and interactive working sessions with diverse stakeholders.



MEMBER OPPORTUNITIES

Individuals from UKGBC member organisations can join this project as Task Group and workshop participants — playing a hands-on role in shaping the work, sharing their expertise, and collaborating with a dynamic network of peers.

Anticipated timeline: Running from September 2025 to Summer 2026.

To discuss further, get in touch with [Anna Hollyman](#) and [Joanne Wheeler](#), UKGBC's Heads of Policy and Places.

ENERGY DISTRIBUTION SYSTEMS

OVERVIEW

Energy system management is increasing in complexity due to increasing demand, decentralisation of generation, and intermittency of renewables. The lack of system-scale thinking on electrification from the built environment is one we can no longer afford if we are to meet the UK energy security goals and reinforce resilience of supply while maintaining a trajectory to net zero. This project aims to support organisations in the energy systems space with insight from the entire built environment value chain to enable the net zero transition.

WHAT TO EXPECT

- **Building Strategic Insights:** The project will explore a range of aspects related to bridging the gap between current energy systems and existing infrastructure, at national and local level, with strong consideration of systems change, resilience and creating regenerative places.
- **Collaboration and Exploration of Innovative Models:** Focus areas will include innovation models and local distribution systems, through engagement with the energy sector to accelerate change, policy and regulatory consideration. Aiming to work with all levels of government to enable the change and practical guidance needed to support the built environment sector on this journey.
- **Practical Guidance:** This project will look to build upon UKGBCs existing renewable energy procurement guidance as well as emerging standards, such as the UK Net Zero Carbon Buildings Standard, to understand what is needed to better enable the transition to net zero.

MEMBER OPPORTUNITIES

Individuals from UKGBC member organisations can join this project as Task Group participants — playing a hands-on role in shaping the work, sharing their expertise, and collaborating with a dynamic network of peers.

PARTNERSHIP OPPORTUNITIES

For members seeking a more strategic role, becoming a Project Partner includes a £5,000 contribution and provides opportunities to steer the project's direction, gain visibility through branding and events, and contribute more deeply to sector-wide impact.

Timeline: Starting Autumn 2025.



To discuss further, get in touch with
Yetunde Abdul, Director of Industry Transformation

POLICY AND ADVOCACY



OVERVIEW

This is a strategic opportunity to shape the future of the built environment by supporting UKGBC's integrated top-down, bottom-up approach to policy and advocacy.

We work across international, national, devolved, and local government, to positively influence policy development, significant shifts in government policy are crucial to ensuring that our built environment is fit for purpose. We firmly believe that well-thought-out policy and regulation are powerful enablers of progress — levelling the playing field for progressive businesses in our membership and helping to create thriving markets.

WHAT TO EXPECT

- **Strategic Advocacy and Engagement:** UKGBC's advocacy spans analysis, consultation responses, coalition-building, and direct engagement with policymakers and politicians.
- **Shaping Policy and Public Dialogue:** We work to shape new legislation, develop evidence-based recommendations, and brief government officials and the media on industry priorities. This year, our key asks of government are:
 - Make home and building upgrades an easy choice.

- Make our towns and communities healthy, well-connected and green.
- Protect our homes and businesses from climate risks.

MEMBER OPPORTUNITIES

UKGBC's regular Policy Newsletter lets our members know when there are opportunities to feed into consultations and discuss new legislation, keep an eye on the latest emails!

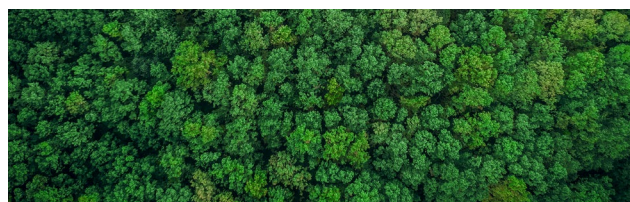
PARTNERSHIP OPPORTUNITIES

For members seeking a more strategic role, becoming a Policy Partner includes a £5,000 contribution and provides the opportunity to shape these campaigns, support our strategic direction, and receive early insights into the policy landscape.

Anticipated Timeline: This work is continuously ongoing. Partnerships are for a year and can join at any time.



Green groups praise 'life-changing' Warm Homes Plan commitment



To discuss further, get in touch with [Anna Hollyman](#) and [Joanne Wheeler](#), UKGBC's Heads of Policy and Places.

LEARNING AND DEVELOPMENT

"IT IS NOT AN OVERSTATEMENT TO SAY THIS PROGRAMME HAS LITERALLY CHANGED WATES, IT IS INCREDIBLE TO SEE THE CHANGE OVER THE TWO YEARS"

**-BEKIR ANDREWS, ENVIRONMENTAL SUSTAINABILITY
DIRECTOR, WATES GROUP.**

OVERVIEW

UKGBC's Learning and Development portfolio is designed to help individuals and organisations deepen their knowledge of sustainability in the built environment and convert that knowledge into action. Our programme addresses the skills gap by making relevant, accessible, and applied learning available across the industry.

WHAT TO EXPECT

We're developing a series of new learning products, including:

- **Case Stories:** Researching and curating live project insights and personal stories of success from across industry. Sharing exciting examples will tell the human story of getting innovative and pioneering projects delivered: What were the success criteria? What did the team do differently?
- **Greatest Hits:** Designing and delivering learning materials based on UKGBC's most impactful reports from across the years.
- **AI tool:** Building an AI tool which uses UKGBC reports and guidance to help industry access UKGBC insights via user-friendly, query-based interface. Support and collaboration is needed to scope, build, test and pilot a tool.
- **Nature & Biodiversity Course:** An interactive on-demand course complementing our existing carbon and resilience learning offers.

MEMBER OPPORTUNITIES

UKGBC's courses, masterclasses, and training are designed to inspire action and build confidence at every career stage. [Discover our learning opportunities here.](#)

PARTNERSHIP OPPORTUNITIES

For members seeking a more strategic role, becoming a Learning Partner includes a £5,000 contribution and provides opportunities to steer the project's direction, gain visibility through branding and events, and contribute more deeply to sector-wide impact.

Anticipated timeline: Starts Autumn 2025, with partnerships running for a year.



To discuss further, get in touch with [Joe Pitts-Cunningham, Experiential Learning and Events Manager](#)

FURTHER OPPORTUNITIES TO GET INVOLVED AS A MEMBER



Also included in your UKGBC membership are other ways to feed into projects, engage with peers, and take advantage of learning and leadership opportunities.

CONNECT AND COLLABORATE

- **Join UKGBC Forums** to exchange insights, tackle emerging challenges, and co-create solutions in a trusted, peer-to-peer environment:
 - [Net Zero Forum](#)
 - [Circular Economy Forum](#)
 - [Local Authority Retrofit Forum](#)
 - [Innovative Start Up Forum](#)
 - **Embodied Ecological Impacts Forum** (upcoming, more information available soon)
- **Attend UKGBC events** - including workshops, roundtables, and networking sessions - to stay informed, share expertise, and build meaningful industry connections. [Explore upcoming events.](#)

LEARN AND GROW

- **Access expert-led learning opportunities** that empower your teams to lead on sustainability: Courses, masterclasses, and training designed to inspire action and build confidence at every career stage. [Discover learning opportunities.](#)

LEAD AND INFLUENCE

- **Get involved in UKGBC projects** that shape the future of the built environment - contribute your expertise to real-world initiatives and collaborative outputs.
- **Help shape industry direction** by contributing to working groups, consultations, and thought leadership activities that influence policy and best practice.

ABOUT UKGBC

UKGBC is uniting the UK building industry using sustainability as a catalyst to positively transform the places people use every day.

As a membership-led industry network, we represent the unified voice of our industry's current and future leaders who are working together to deliver a just transition across the sector, in response to the climate and nature crises.

Powered by member organisations from across the value chain, UKGBC is at the forefront of positively influencing policy, identifying the pathways required to propel the sector forward sustainably and driving the solutions to transform our buildings, communities, cities and infrastructure so that people and nature thrive.

Learn more about our impact in our recent Impact Report.

CONTACT US

The Building Centre; 26 Store Street; London; WC1E 7BT

info@ukgbc.org

